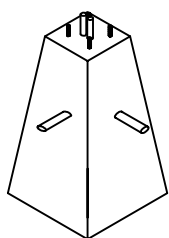
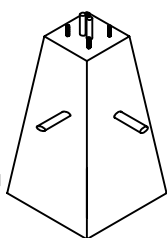


BASE DE LAMPADAIRE STANDARD PREFAB



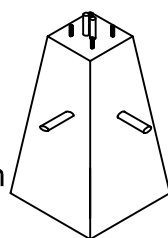
BC-405

TÊTE: 405mm
BASE: 760mm
HAUTEUR: 1 830mm
POIDS: 1 500 Kg



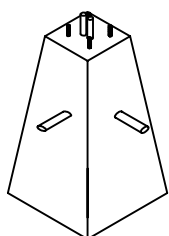
BC-425

TÊTE: 425mm
BASE: 915mm
HAUTEUR: 1 830mm
POIDS: 1 991 Kg



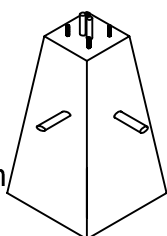
BC-450

TÊTE: 450mm
BASE: 950mm
HAUTEUR: 2 000mm
POIDS: 2 353 Kg



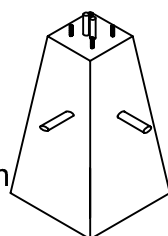
BC-560

TÊTE: 560mm
BASE: 760mm
HAUTEUR: 1 830mm
POIDS: 1 917 Kg



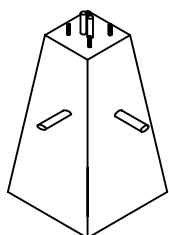
BC-600

TÊTE: 600mm
BASE: 915mm
HAUTEUR: 1 830mm
POIDS: 2 552 Kg



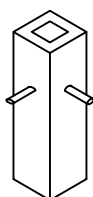
BCX-600

TÊTE: 600mm
BASE: 915mm
HAUTEUR: 2 743mm
POIDS: 3 829 Kg



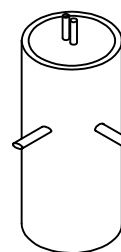
BC-750

TÊTE: 750mm
BASE: 1200mm
HAUTEUR: 1 830mm
POIDS: 4 313 Kg



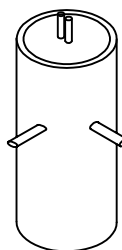
MT-500

TÊTE: 405mm
BASE: 760mm
HAUTEUR: 1 830mm
POIDS: 1 134 Kg



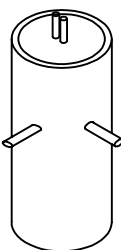
ML2-1

CYL: 610mmØ
HAUTEUR: 2 000mm
POIDS: 1 438 Kg



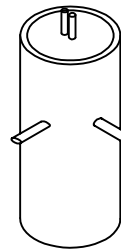
ML2-3S

CYL: 700mmØ
HAUTEUR: 2 300mm
POIDS: 3 841 Kg



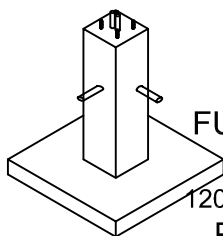
ML2-4

CYL: 610mmØ
HAUTEUR: 2 500mm
POIDS: 1 793 Kg



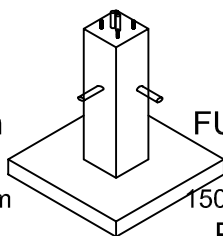
ML2-5

CYL: 915mmØ
HAUTEUR: 2 500mm
POIDS: 3 973 Kg



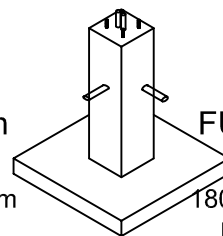
ME-0

FUT:450 X 1525mm
SEMELLE:
1200 X 1200mm X 250mm
POIDS: 1 686 Kg



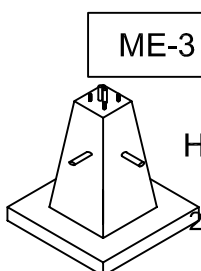
ME-1

FUT:450 X 1525mm
SEMELLE:
1500 X 1500mm X 300mm
POIDS: 2 467 Kg



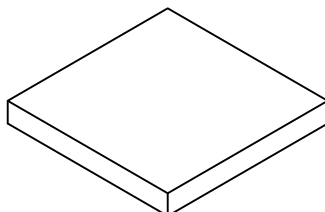
ME-2

FUT:550 X 1525mm
SEMELLE:
1800 X 1800mm X 350mm
POIDS: 4 002 Kg



ME-3

FUT:
TÊTE: 600mm
BASE: 915mm
HAUTEUR: 1 830mm
SEMELLE:
2100 X 2100mm X 400mm
POIDS: 6 792 Kg



SEMELLE DISPONIBLE STANDARD:

1500 X 1500 X 300 => 1 622Kg
1800 X 1800 X 350 => 2 726Kg
1200 X 1200 X 300 => 1 038Kg
2100 X 2100 X 400 => 4 240Kg

Produits de béton

